

# MIGTI INDUSTRIAL PVT LTD

- PIPE JOINT SYSTEM
- ALLUMINIUM PROFILE
- CASTORS
- FABRICATED GOODS
- SPM & AUTOMATION
- AGING TROLLEYS
- CONVEYORS
- SMT SOLUTIONS
- ADMIN SOLUTIONS
- WAREHOUSE SOLUTIONS

## About Us

**Migti Industrial Pvt Ltd are the manufacturer and supplier of industrial infrastructure and Infrastructure accessories fulfilling your industrial requirements starting from production shop floor to Finished Goods Store.**

**Migti Industrial offers a wide range of industrial infrastructure accessories that an industry could need for different purposes.**

**Industrial Infrastructure segment of MIGTI covers different structures and assemblies to handle the industrial material and movement to increase the productivity. Trolleys/ carts, bins/crates, workstations and conveyors fall in this category.**

## Our Mission

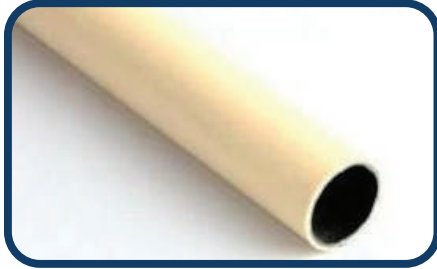
**Migti Industrial Pvt Ltd have a strong vision for technology development and manufacturing of industrial infrastructure products and supply of these products to almost every industry need.**

## Our Vision

**Migti Industrial Pvt Ltd have a strong vision of business expansion across the India and the Globe. Our vision stands on a strong foundation of honesty, trust and industrial infrastructure product development.**

## PIPES

OD - 28 MM, STANDARD LENGTH - 4 METER



ABS PIPE



ESD PIPE



SS PIPE - SCREWABLE



GREY POWDER COATED PIPE



SS PIPE - NON SCREWABLE

## PIPE JOINT SYSTEM

VARIETIES : BLACK, ZINC PLATED, CHROME PLATED

### PIPE JOINTS



M1



MA1



M2



MA2



M3



MA3



M4



MA4



M5



MA5

## PIPE JOINT SYSTEM



M-7 A



MA6



M-7 B



M8



MA8



M9



MA9



M10



MA-10AS



M11



MA11



M12



M13



MA-13



M-14A



MA-14



M-14B



M15



MA15



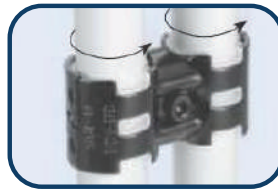
M16



MA16



M17



MA17



M-17A



M18



MA18



M20



M21A



MA100



MA12

## PIPE JOINT SYSTEM ACCESSORIES

### PLACON ROLLERS



PLACON ROLLER 40 TYPE WHITE



PLACON ROLLER 80 TYPE WHITE

### ROLLER BRACKETS



40A WITHOUT STOPPER



40B WITH STOPPER



40D



40E WITH STOPPER



80A WITHOUT STOPPER



80B WITH STOPPER



80D

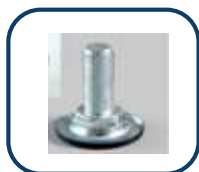


80E WITH STOPPER

### HEIGHT ADJUSTER



FULL METAL PLATE  
HALF INCH 50 MM



FULL METAL PLATE  
M10X100 MM



FULL METAL WITH  
RUBBER COATING



HALF METAL PLATE  
M12X100 MM



RUBBER COATED HALF  
INCH 50MM

## PIPE JOINT SYSTEM ACCESSORIES

### METAL INSERT BUSH



**METAL INSERT BUSH  
(PLASTIC IVORY)**



**METAL INSERT BUSH  
INCH TYPE FOR  
ABS PIPE**



**METAL INSERT BUSH  
INCH TYPE FOR  
SS PIPE**



**METAL INSERT BUSH  
MM TYPE FOR  
ABS PIPE**



**METAL INSERT BUSH  
MM TYPE FOR  
SS PIPE**

### INNER END CAPS



**INNER END CAP  
28 OD (BLACK)**



**INNER END CAP  
MA 102 (GREY)**



**INNER END CAP MA-102  
( 28 OD YELLOW)**



**INNER END CAP  
MA-102 (BLACK)**

### OUTER END CAP



**OUTER END CAP  
MA-111(28 OD  
FOR SS PIPE)**



**OUTER END CAP  
MA-111  
(FOR ABS PIPE)**



**OUTER END CAP  
MA-111 (28 OD  
FOR ABS PIPE)**



**OUTER END CAP  
MA-111  
(FOR SS PIPE)**



**OUTER CAP PIPE  
OD 25 MM**

## PIPE JOINT SYSTEM ACCESSORIES

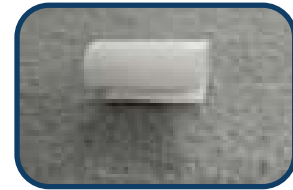
### PLASTIC FITTINGS



PAPER CLIP MA-113  
(IVORY)



PAPER CLIP MA-114  
(IVORY)



PVC CLIP PLAIN



SINGLE SIDED C-CLIP  
FOR MDF MOUNTING  
MA-102 (BLACK)



SINGLE SIDED C-CLIP  
FOR MDF MOUNTING  
MA-102 (IVORY)



SINGLE SIDED C-CLIP  
FOR MDF MOUNTING  
METAL



PLASTIC SLEEVE  
BLACK



PLASTIC SLEEVE  
WHITE

## PIPE JOINT SYSTEM ACCESSORIES

### FOOT



**FOOT PLATE**



**RUBBER FOOT M12 X 35MM**



**PLASTIC FOOT M6X40MM**



**FOOT PLATE RUBBER  
OD 65 ID 10 MM  
THICKNESS 8 MM**



**PLASTIC FOOT CLEAN  
ROOM HALF INCH 120MM**



**PLASTIC FOOT CLEAN  
ROOM**

### PIPE MOUNTER



**PIPE MOUNTER-PIPE  
OD 32 ID 29 MM  
PLAT 60X60 MM**

### NAME PLATE HANGER



**NAME PLATE HANGER  
HOOK TYPE**



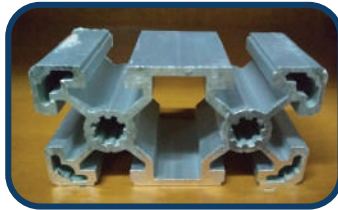
**NAME PLATE HANGER  
PLATE TYPE**

## ALUMINIUM PROFILE SECTIONS

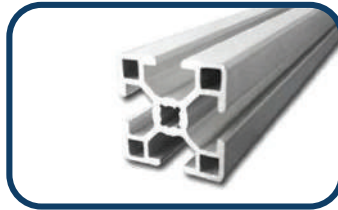
STANDARD LENGTH = 4.5 METER



30X30



30X60



40X40



40X80

## ALUMINIUM SECTION ACCESSORIES

### L BRACKET

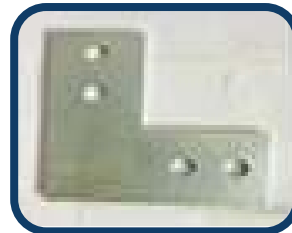


L BRACKET  
40X40



L-BRACKET 30X30

### FLAT TYPE BRACKETS

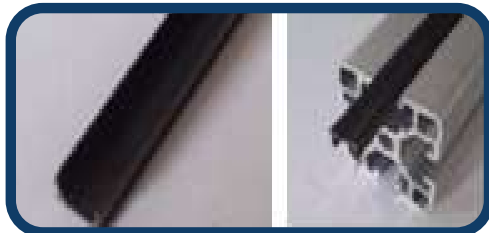


L-BRACKET FLAT  
TYPE 40X40

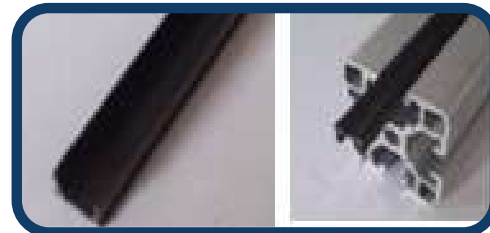


T-BRACKET FLAT  
TYPE 40X40 MM

### BEADING



PLASTIC BEADING 40 OR 30 SIZE WIDTH 10  
MM HEIGHT 10 MM LENGTH 2 MTR 40X40



RUBBER BEADING C

## ALUMINIUM SECTION ACCESSORIES

### END CAP



END CAP 30X30 MM



END CAP 40X40



END CAP 40X80 MM

### PROFILE NUT



PROFIE NUT 30X30 SQUARE  
 NUT 30X30 M6 (14X14X6  
 MM) HEAD OD 8.3 MM



PROFILE NUT 40X40 SQUARE  
 NUT 40X40 M8 (16X16 MM)  
 WITH OUT HEAD



T NUT



T-NUT 30X30 M6  
 (18X8.4X7.6 MM) HEADD  
 OD 7.56 MM

### PROFILE BOLT



ALLEN BOLT  
 M8X10 MM



PROFILE BOLT  
 30X30 ALLEN BOLT  
 M6X12 MM



PROFILE BOLT 30X30 T  
 BOLT WITH NUT  
 M6X20 MM



PROFILE BOLT 30X30  
 BUTTON HEAD CSK M6X12  
 MM(BUTTON HEAD)

# CASTORS

## PLATE TYPE CASTOR ( MATERIAL : ESD AND NON ESD )



PLATE TYPE CASTOR SWIVEL ( SW )



PLATE TYPE CASTOR SWIVEL WITH BRAKE ( SWB )

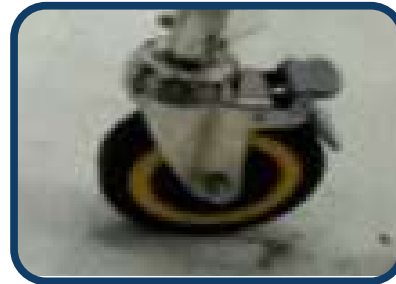


PLATE TYPE CASTOR FIXED

## PILLAR TYPE CASTOR ( MATERIAL : ESD AND NON ESD )



PILLAR TYPE CASTOR SWIVEL ( SW )



PILLAR TYPE CASTOR SWIVEL WITH BRAKE ( SWB )

## THIRD TYPE CASTOR ( MATERIAL : ESD AND NON ESD )



THIRD TYPE CASTOR SWIVEL ( SW )



THIRD TYPE CASTOR SWIVEL WITH BRAKE ( SWB )

## WORKSTATIONS / TABLES

### WORKSTATIONS/ TABLES/RACKS/STAND/TROLLEYS

#### PIPE JOINT PRODUCTS

#### PIPE JOINT WORKSTATIONS



**WORKING TABLE**



**FQC TABLE**

#### PIPE JOINT RACKS



**BIN STAND RACK**



**PIPE JOINT FIFO RACK**

## WORKSTATIONS / TABLES

### PIPE JOINT TROLLEY



PIPE JOINT TROLLEY



PIPE JOINT CHARGING TROLLEY



PIPE JOINT REEL TROLLEY



PIPE JOINT TROLLEY

### PIPE JOINT STANDS



WORKING BIN STAND



PIPE JOINT STAND



BIN STAND

## WORKSTATIONS / TABLES

### WORKSTATIONS/ TABLES/RACKS/STAND/TROLLEYS

#### ALUMINIUM PROFILE PRODUCTS

#### ALUMINIUM PROFILE WORKSTATIONS



**ALUMINIUM PROFILE  
WORKING TABLE**



**DOUBLE SIDED  
WORKING TABLE**



**AL PROFILE WORKSTATION**

#### ALUMINIUM PROFILE RACKS



#### ALUMINIUM PROFILE TROLLEY



## WORKSTATIONS / TABLES

### ALUMINIUM PROFILE TROLLEYS



**ALUMINIUM PROFILE  
AGING TROLLEY**



**ALUMINIUM TROLLEY**



**AL TROLLEY**

### ALUMINIUM PROFILE STAND



**MACHINE TABLE**



**ALUMINIUM MACHINE  
TABLE**

**WORKSTATIONS / TABLES****MS FABRICATED PRODUCTS****MS FABRICATED PRODUCTS****MS WORKING TABLE****MS WORKTABLE****FABRICATED  
WORKING TABLE****MS FABRICATED TROLLEY****PLATFORM TROLLEY****WIREMESH TROLLEY**

## WORKSTATIONS / TABLES

### SS FABRICATED PRODUCTS



**SS WORKSTATION**



**SS WORK TABLE**



**SS WELDED RACKS**



**SS WELDED TROLLEYS**

**WORKSTATIONS / TABLES****WIRE MESH PRODUCTS****SS WIREMESH TROLLEY****WIREMESH TROLLEY****WIREMESH STENCIL  
TROLLEY****WIREMESH STAND**

## AGING AND CHARGING TROLLEYS/ RACKS

### AGING AND CHARGING TROLLEYS/ RACKS



**ADAPTER AGING  
TROLLEY**



**MOBILE AGING/  
CHARGING TROLLEY**



**CHARGING AGING  
TROLLEY**



**SS AGING CHARGING  
TROLLEY**



**SMART WATCH AGING  
TROLLEY**



**BATTERY AGING/  
CHARGING TROLLEY**

## CONVEYORS



**FLAT BELT CONVEYOR**



**FLAT BELT CONVEYOR  
WITH SIDE WORKING  
PLATFORM**



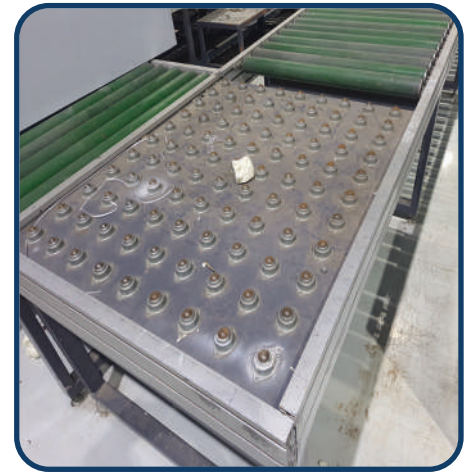
**INCLINED CONVEYOR**



**MI LINE CONVEYOR**



**ROLLER CONVEYOR**



**BALL CASTER ROLLER  
CONVEYOR**

## SMT REEL STORAGE TROLLEY

### SMT REEL STORAGE TROLLEY ROD TYPE



ROD TYPE REEL STORAGE TROLLEY



ROD TYPE REEL TROLLEY

### SMT REEL STORAGE TROLLEY SHEET TYPE



SHEET TYPE REEL STORAGE TROLLEY



DOUBLE V TYPE REEL STORAGE TROLLEY

## STENCIL TROLLEYS



**STENCIL TROLLEY TYPE 1**



**STENCIL TROLLEY TYPE 2**



**STENCIL TROLLEY WITH DOOR**



**STENCIL TROLLEY**

## SMT WIREMESH TROLLEYS



**SS WIREMESH TROLLEY**



**SMT BIN TROLLEY**



**WIREMESH TROLLEY**



**WIREMESH STENCIL TROLLEY**

## STENCIL TROLLEYS

### SMT MAGAZINE RACK OR ESD MAGAZINE RACK



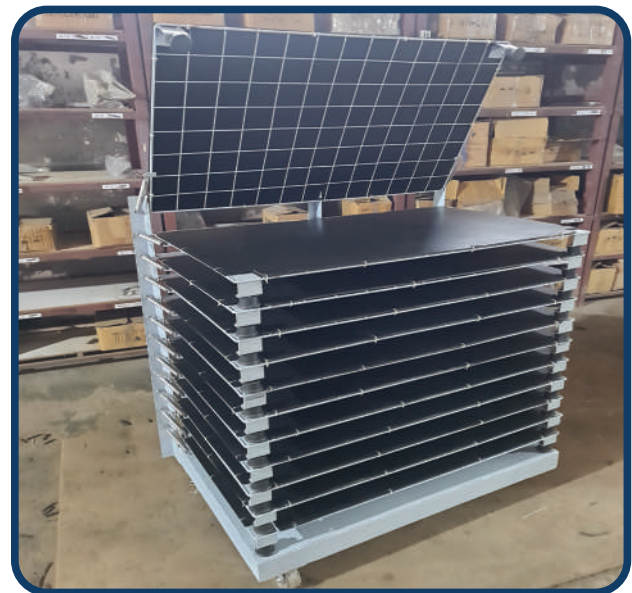
**SMT MAGAZINE RACK**



**SMT PCB MAGAZINE RACK**



**ESD PCB STORAGE TROLLEY**



**SMT PCB TROLLEY FOLDABLE**

## SMT CONVEYORS



**MAIN ASSEMBLY CONVEYOR**



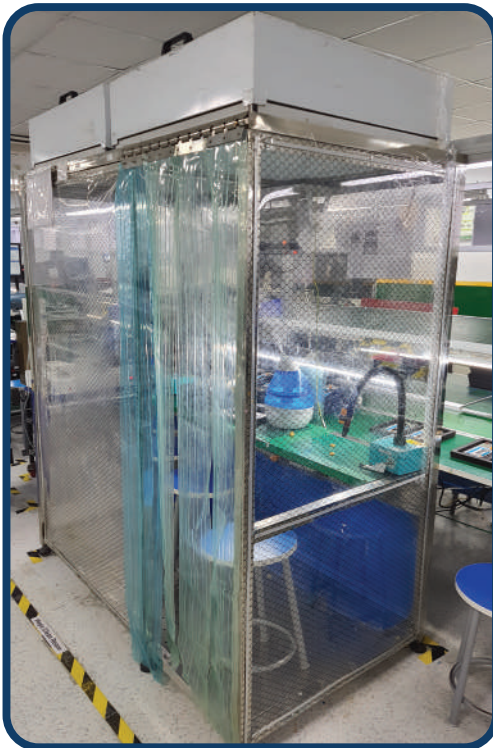
**MI LINE CONVEYOR**



**WIRE MESH BELT CONVEYOR**



**GRAPHIC BELT CONVEYOR**

**CLEAN ROOM SOLUTIONS****CLEAN ROOM FAN & FILTER****CLEAN ROOM CABINET**

# OFFICE FURNITURE

## OFFICE TABLES



## OFFICE ALMIRAH



**OFFICE FURNITURE**

**EMPLOYEE LOCKERS**



## PLANT PRODUCTION INFRA

### CHEMICAL ALMERIAH



### STOOLS



ESD STOOL PLASTIC TOP



ESD STOOL FOAM TOP



ESD MS PIPE STOOL WITH WOODEN TOP



SS STOOL

## CANTEEN FURNITURE



SS CANTEEN TABLE

**WAREHOUSE SOLUTIONS**

**LIGHT DUTY RACK**



**SLOTTED RACK 1**



**SLOTTED RACK 2**



**SLOTTED RACK 3**

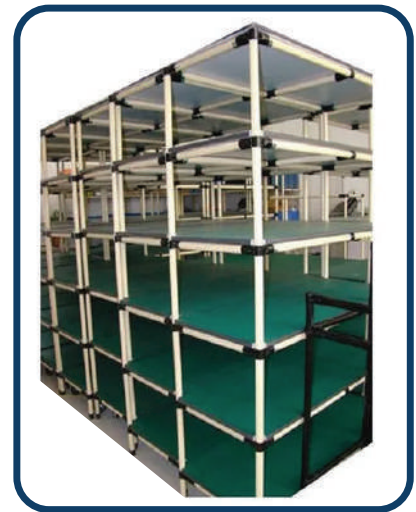
**PIPE JOINT FIFO RACKS**



**PIPE JOINT FIFO 1**



**PIPE JOINT FIFO 2**



**PIPE JOINT FIFO 3**

## WAREHOUSE SOLUTIONS



MEZZANINE FLOOR



WAREHOUSE TROLLEY

## WAREHOUSE EQUIPMENT



HAND PALLET TRUCK



STACKER



**MIGTI INDUSTRIAL PVT LTD**

**GSTIN- 09AARCM4143L1ZW**

**OFFICE ADDRESS**

**201, 2ND FLOOR, BLOCK-N, OPP NOIDA STADIUM,  
SECTOR-12, GAUTAM BUDH NAGAR, NOIDA, 201301**

**CONTACT NO. – 9773672381 / 9773672382**

***<http://www.migti.co.in>***